

A1 Birtley to Coal House

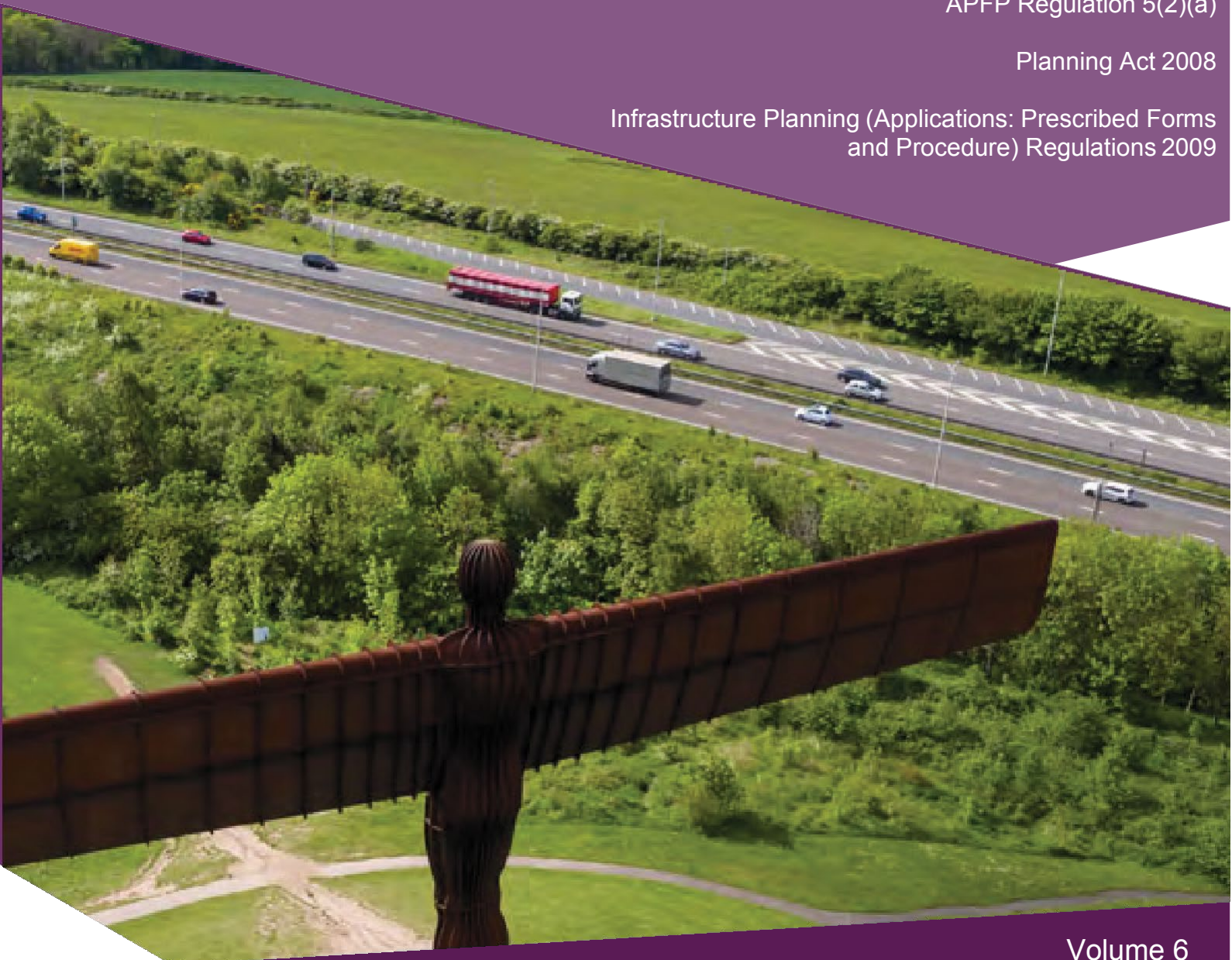
Scheme Number: TR010031

6.2 Environmental Statement – Figures 13.8 Water Framework Directive Waterbodies

APFP Regulation 5(2)(a)

Planning Act 2008

Infrastructure Planning (Applications: Prescribed Forms
and Procedure) Regulations 2009



Infrastructure Planning

Planning Act 2008

**The Infrastructure Planning
(Applications: Prescribed Forms and
Procedures) Regulations 2009**

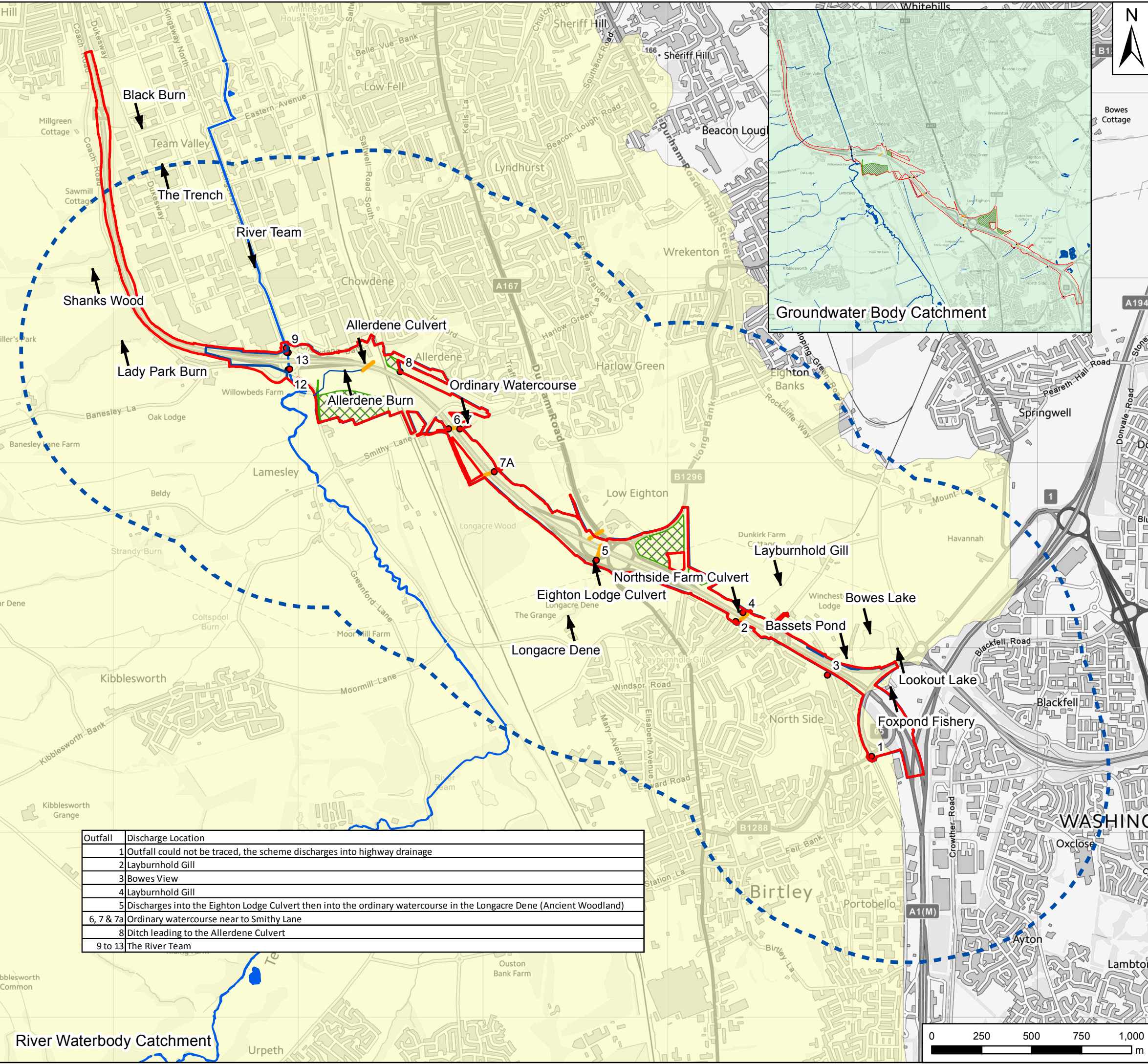
**A1 Birtley to Coal House
Development Consent Order 20[xx]**

**Environmental Statement -
Figures**

Regulation Reference:	APFP Regulation 5(2)(a)
Planning Inspectorate Scheme Reference	TR010031
Application Document Reference	TR010031/APP/6.2
Author:	A1 Birtley to Coal House Project Team, Highways England

Version	Date	Status of Version
Rev 0	14 August 2019	Application Issue

User Name: UKGDH001 Date Saved: 31/07/2019 15:12:12
 Document Path: \\uk.wspgroup.com\central\data\Projects\700419\A1\BCH\PCF Stage 3 and 4\02 WIP\WMA Water and Flood Risk\02 Drawing\GIS\Figure 13.8 - Water Framework Directives Waterbodies.mxd



Key

- Scheme Footprint
- Study Area
- Study Area 1km Buffer
- Proposed Construction Compounds
- Outfalls
- Culverts

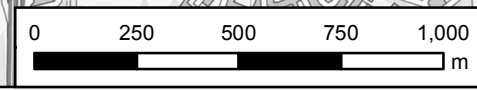
WFD

- Tyne Carboniferous Limestone and Coal Measures
- River Team
- River WB Catchment

Rev	Date	Description	By	Chk'd	App'd
P05	31/07/19	Fourth Issue	GH	SS	AS
P04	24/04/19	Third Issue	EHC	SS	AS
P03	28/02/19	Second Issue	EHC	SS	AS
P02	12/12/18	First Issue	EHC	SS	AS
P01	29/11/18	First Issue	EHC	SS	AS

Suitability		Suitable for Information			Status	S2
PINS Reference Number		TR010031				
Client						
Project Title		A1 Birtley to Coal House Scheme				
Drawing Title		Figure 13.8 Water Framework Directives - Watercourses Regulation 5 (2) (a) Regulation 5 (2) (I)				

Outfall	Discharge Location
1	Outfall could not be traced, the scheme discharges into highway drainage
2	Layburnhold Gill
3	Bowes View
4	Layburnhold Gill
5	Discharges into the Eights Lodge Culvert then into the ordinary watercourse in the Longacre Dene (Ancient Woodland)
6, 7 & 7a	Ordinary watercourse near to Smithy Lane
8	Ditch leading to the Allerdene Culvert
9 to 13	The River Team



Scale	1:20,000	Drawn	EHC	Checked	SS	Approved	AS	Authorised	NJA
Original Size	A3	Date	29/11/18	Date	04/12/18	Date	06/12/18	Date	12/12/18
Drawing Number	HE551462	Originator	WSP	Volume		Revision	P05	PW Stage Code	
B2CH		Section	Type	ID	Direction	Type	Role	Number	

If you need help accessing this or any other Highways England information, please call **0300 470 4580** and we will help you.

© Crown copyright 2019.

You may re-use this information (not including logos) free of charge in any format or medium, under the terms of the Open Government Licence. To view this licence:

visit www.nationalarchives.gov.uk/doc/open-government-licence/

write to the **Information Policy Team, The National Archives,**

Kew, London TW9 4DU, or email

psi@nationalarchives.gsi.gov.uk.

This document is also available on our website at www.gov.uk/highways

If you have any enquiries about this document A1BirtleytoCoalhouse@highwaysengland.co.uk or call **0300 470 4580***.

*Calls to 03 numbers cost no more than a national rate call to an 01 or 02 number and must count towards any inclusive minutes in the same way as 01 and 02 calls.

These rules apply to calls from any type of line including mobile, BT, other fixed line or payphone. Calls may be recorded or monitored.

Registered office Bridge House, 1 Walnut Tree Close, Guildford GU1 4LZ
Highways England Company Limited registered in England and Wales number 09346363